

SECTION 10  
(WASH. TWP.)

NAIL IN BOTTLE  
CAP ON 30" WALNUT  
P 4731

NAIL IN BOTTLE  
CAP ON 16" WALNUT  
36.15

NAIL IN BOTTLE  
CAP ON 18" OAK  
P 5728

NAIL IN BOTTLE  
CAP ON 6" HICKORY  
26.19

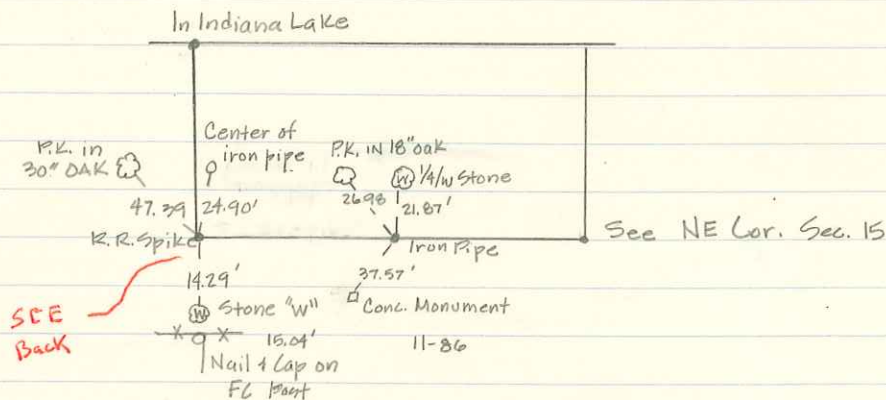
NAIL IN BOTTLE  
CAP ON Fc POST  
15.03

Ed. Nail P. 621

SEE NE COR  
SEC 15

1 1/2" I.P. 24  
MARCH

Section 10  
Washington



S.W. Cor.  
Sect. 10

! F.D.R. Sp. ! Feb. 96

